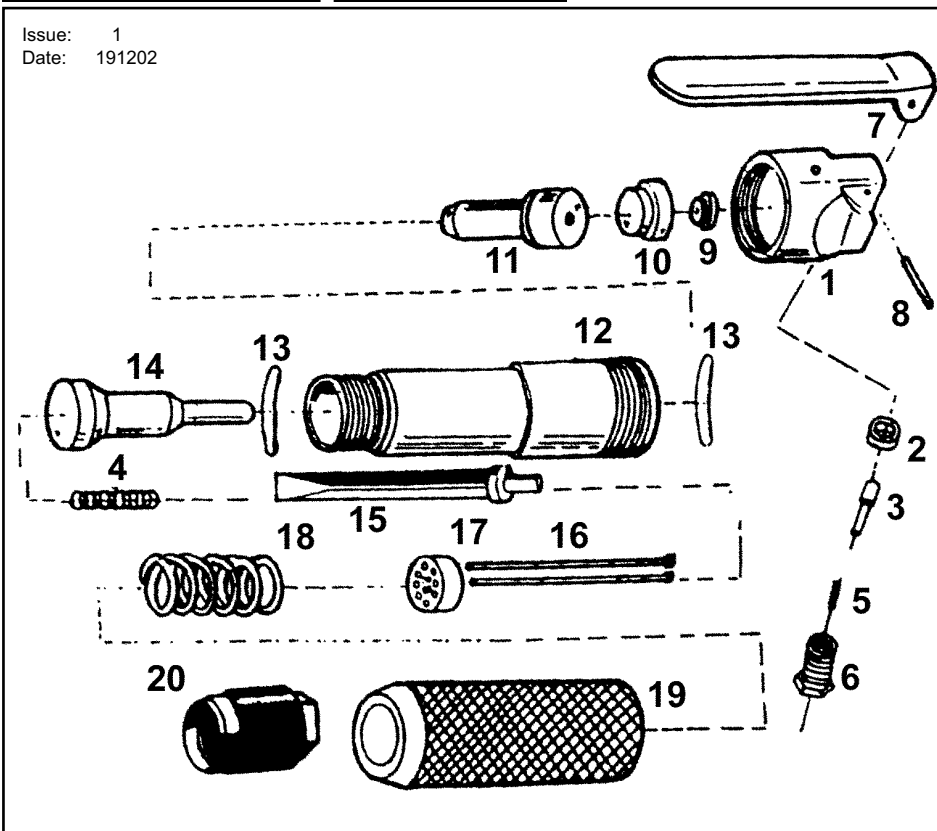


SEALEY POWER TOOLS

PARTS DIAGRAM AND LIST FOR:
AIR NEEDLE SCALER
 Model No: **SA52**

Issue: 1
 Date: 191202



Item	Part No	Description	Item	Part No	Description	Item	Part No	Description
1	SA51/01	Backhead	8	SA51/08	Pin	15	SA52/15	Chisel
2	SA51/02	O-Ring	9	SA51/09	Rubber cushion	16	SA51/16	Needle (pack of 12)
3	SA51/03	Throttle valve	10	SA51/10	Rear valve block	17	SA51/17	Needle holder
4	SA52/04	Spring	11	SA51/11	Piston	18	SA52/18	Spring
5	SA51/05	Spring	12	SA51/12	Barrel sleeve	19	SA51/19	Needle tube
6	SA51/06	Valve cap	13	SA51/13	O-Ring	20	SA51/20	Nut
7	SA51/07	Lever	14	SA51/14	Needle driver			

NOTE: It is our policy to continually improve products and as such we reserve the right to alter data, specifications and component parts without prior notice.

IMPORTANT: No liability is accepted for incorrect use of this equipment.

WARRANTY: Guarantee is 12 months from purchase date, proof of which will be required for any claim.

INFORMATION: For a copy of our latest catalogue and promotions, call us on 01284 757525 and leave your full name and address including your postcode.

SEALEY POWER TOOLS Sole UK Distributor, Sealey Group, Bury St. Edmunds, Suffolk.

01284 757500

01284 703534

sales@sealey.co.uk

www.sealey.co.uk

SA52 - 1 - 191202

SEALEY POWER TOOLS

INSTRUCTIONS FOR AIR FLUX CHIPPER/ NEEDLE SCALER

Model: **SA52**

Thank you for purchasing a Sealey Product. Manufactured to a high standard this product will, if used according to these instructions and properly maintained, give you years of trouble free performance.

IMPORTANT: PLEASE READ THESE INSTRUCTIONS CAREFULLY. NOTE THE SAFE OPERATIONAL REQUIREMENTS, WARNINGS AND CAUTIONS. USE THIS PRODUCT CORRECTLY AND WITH CARE FOR THE PURPOSE FOR WHICH IT IS INTENDED. FAILURE TO DO SO MAY CAUSE DAMAGE AND/OR PERSONAL INJURY AND WILL INVALIDATE THE WARRANTY. PLEASE KEEP INSTRUCTIONS SAFE FOR FUTURE USE.

1. SAFETY INSTRUCTIONS

- WARNING!** Ensure health & safety, local authority, and general workshop practice regulations are adhered to when using this equipment.
- WARNING!** Disconnect from air supply before changing accessories or servicing.
- ✓ Maintain the tool in good condition and replace any damaged or worn parts. Use genuine parts only. Unauthorised parts may be dangerous and will invalidate the warranty.
- WARNING!** Check correct air pressure is maintained and not exceeded. We recommend 90psi.
- ✓ Keep air hose away from heat, oil and sharp edges. Check air hose for wear before each use and ensure that all connections are secure.
- ✓ Only use needles which are specifically designed for use with the needle scaler.
- ✓ Wear approved safety eye/face shield, ear defenders, and hand protection.
- ✓ Maintain correct balance and footing. Ensure the floor is not slippery and wear non-slip shoes.
- ✓ Keep children and non essential persons away from the working area.
- ✗ DO NOT use the tool for a task it is not designed to perform.
- WARNING! DO NOT** use tool if damaged or thought to be faulty. (Contact Sealey service agent).
- ✗ DO NOT use tool unless you have been instructed in its use by a qualified person.
- ✗ DO NOT carry the tool by the air hose, or yank the hose from the air supply.
- ✗ DO NOT operate tool if you are tired or under the influence of alcohol, drugs or intoxicating medication.
- ✗ DO NOT carry tool with your hand on the power trigger in order to avoid unintentional starting.
- ✗ DO NOT direct air from the air hose at yourself or others.
- ✓ When not in use disconnect from air supply and store in a safe, dry, childproof location.

2. INTRODUCTION & SPECIFICATIONS

The SA52 is a straight type air hammer supplied with interchangeable needle and chisel heads. Suitable for cleaning heavy paint and rust scale from metal surfaces. Palm control trigger mechanism. Replaceable scaler needle set.

Stroke16mm
 Free speed4000bpm
 Air consumption4cfm
 Noise level92.8dB(A)

Operating pressure90psi
 Air inlet size1/4" BSP
 Weight1.2kg
 Vibration18m/s²

SA52 - 1 - 191202

3. PREPARING TOOL FOR USE

3.1. Air Supply

- 3.1.1. Ensure tool valve (or trigger) is in the "off" position before connecting to the air supply.
- 3.1.2. You will require an air pressure of 90psi, and an air flow according to specification.
- 3.1.3. **WARNING!** Ensure the air supply is clean and does not exceed 90 psi while operating the tool. Too high an air pressure and unclean air will shorten the product life due to excessive wear, and may be dangerous causing damage and/or personal injury.
- 3.1.4. Drain the air tank daily. Water in the air line will damage the tool.
- 3.1.5. Clean air inlet filter weekly. Recommended hook-up procedure is shown in fig 1.
- 3.1.6. Line pressure should be increased to compensate for unusually long air hoses (over 8 metres). The minimum hose diameter should be 1/4" I.D. and fittings must have the same inside dimensions.
- 3.1.7. Keep hose away from heat, oil and sharp edges. Check hose for wear, and make certain that all connections are secure.

3.2. Couplings.

Vibration may cause failure if a quick change coupling is connected directly to the tool. To overcome this, connect a leader hose to the tool. A quick change coupling may then be used to connect the leader hose to the air line recoil hose. See fig 1 & 2.

fig 1

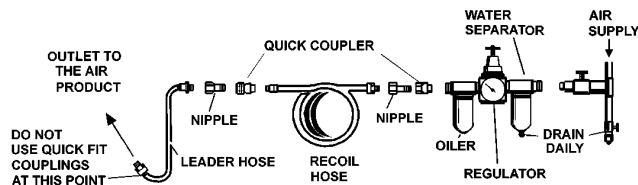
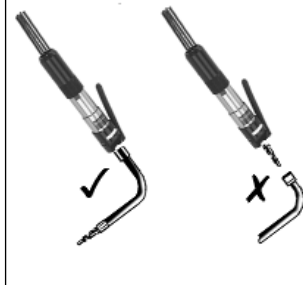


fig 2



4. OPERATING INSTRUCTIONS

- WARNING!** Ensure you read, understand and apply safety instructions before use.

Note: Numbers in brackets refer to item numbers in the parts diagram.

4.1. Flux chipper

- 4.1.1. Fit the spring (4) onto the rounded end of the chisel (15) before fitting the chisel into the barrel sleeve (12).
- 4.1.2. Fit the nut (20) over the sharpened end of the chisel (15), screw it onto the barrel sleeve (12) and tighten.
- 4.1.3. Connect the tool to the air hose as in chapter 3.
- 4.1.4. To start the tool, depress the throttle lever.

4.2. Needle scaler

- 4.2.1. To use as a needle scaler, unscrew the nut (20) and remove the chisel (15) and spring (4).
- 4.2.2. Fit the needle driver (14) and ensure the spring (18) is located in the needle tube (19).
- 4.2.3. Ensure the needle holder (17) is fitted with needles (16) such that the heads of the needles do not protrude above the surface of the needle holder.

- 4.2.4. Fit the needle holder (17) into the needle tube (19), screw the needle tube (19) onto the barrel sleeve (12) and tighten.
- 4.2.5. To start the tool, depress the throttle lever.

DO NOT allow the tool to free run for an extended period of time as this will shorten its life.

5. MAINTENANCE

- WARNING!** Disconnect tool from air supply before changing accessories, servicing or performing maintenance. Replace or repair damaged parts. *Use genuine parts only. Unauthorised parts may be dangerous and will invalidate the warranty.*

Note: Numbers in brackets refer to item numbers in the parts diagram.

- 5.1. To replace the needles (16), unscrew the needle tube (19) from the barrel sleeve (12). Remove the needle holder (17) and replace the needles (16). (Use genuine Sealey needles only.) Refit the needle holder (17) into the needle tube (19), screw it onto the barrel sleeve (12) and tighten.
- 5.2. Lubricate the tool daily with a few drops of Sealey air tool oil dripped into the air inlet.
- 5.3. Clean the tool after use.
- 5.4. Loss of power or erratic action may be due to the following:
 - a) Excessive drain on the air line. Moisture or restriction in the air pipe. Incorrect size or type of hose connectors. To remedy check the air supply and follow instructions in chapter 3.
 - b) Grit or gum deposits in the tool may also reduce performance. Flush the tool out with gum solvent oil or an equal mixture of SAE No 10 oil and paraffin. Allow to dry before use.
- 5.5. For a full service contact your local Sealey service agent.
- 5.6. When not in use, disconnect from air supply, clean tool and store in a safe, dry, childproof location.

Declaration of Conformity



We, the sole importer into the UK, declare that the product listed here is in conformity with the following standards and directives. The construction file for this product is held by the Manufacturer and may be inspected, by a national authority, upon request to Jack Sealey Ltd.

Air Flux Chipper/Needle Scaler

Model: SA52

98/37/EC Machinery Directive
93/68/EEC Marking Directive

Signed by Mark Sweetman

19th December 2002

For Jack Sealey Ltd. Sole importer into the UK
of Sealey Power Tools.