

Thank you for purchasing a Sealey product. Manufactured to a high standard this product will, if used according to these instructions and properly maintained, give you years of trouble free performance.



IMPORTANT: PLEASE READ THESE INSTRUCTIONS CAREFULLY. NOTE THE SAFE OPERATIONAL REQUIREMENTS, WARNINGS AND CAUTIONS. ALSO CONSULT YOUR VEHICLE MANUFACTURER'S HANDBOOK AND TAKE NOTE OF ANY SPECIAL INSTRUCTIONS RELATING TO TOWING, PARTICULARLY ON VEHICLES WITH AUTOMATIC TRANSMISSIONS. USE THIS PRODUCT CORRECTLY AND WITH CARE FOR THE PURPOSE FOR WHICH IT IS INTENDED. FAILURE TO DO SO MAY CAUSE DAMAGE OR PERSONAL INJURY AND WILL INVALIDATE THE WARRANTY. PLEASE KEEP INSTRUCTIONS SAFE FOR FUTURE USE.

1. SAFETY INSTRUCTIONS

- ✓ Maintain the tow pole in good condition. Replace or repair damaged parts. *Use recommended parts only. Non-authorized parts may be dangerous and will invalidate the warranty.*
- ✓ Check vehicle manufacturer's instructions to determine whether the vehicle is equipped with proper tow fittings suitable for use with a tow pole.
- ✓ Use tow pole only on vehicles with standard tow fittings.
- ✓ Ensure the tow fittings, and the area of the vehicle to which the fittings are secured, are strong and solid enough for towing. DO NOT use the tow pole if there is damage or heavy rust around the fitting area.
- ✓ Place an "ON TOW" notice in the back window or other visible location at the rear of the towed vehicle. Attach a marker (a piece of rag or fabric, preferably red) to the centre of the tow pole.
- ✓ The vehicle to be towed must be fully legal in respect of having the registration number visible at all times, must have a valid road tax, insurance and relevant current DOT test certificate. DO NOT tow a vehicle that lacks one or more of these requirements.
- ✓ Towed vehicle must have the ignition on in order to operate lights, brake lights and indicators. If these lights cannot be operated, you must fit a repeater trailer board to towed vehicle. Contact your local Sealey dealer for information relating to approved towing boards which must incorporate lighting and signalling equipment.
- ✓ Ensure that the person in the towed vehicle is aware that, if servo brakes and/or power steering are fitted, then braking and/or steering efforts will be very much higher than normal when the engine is not running.
- ✗ DO NOT use the tow pole if damaged.
- ✗ DO NOT tow vehicle if the steering lock cannot be disengaged.
- ✗ DO NOT use the tow pole on a vehicle with defective braking system.
- ✗ DO NOT tow an unmanned vehicle.
- ✗ DO NOT force the tow pole to achieve a task it was not designed to perform.
- ✗ DO NOT allow untrained persons to operate the tow pole.
- ✗ DO NOT exceed the rated capacity of the tow pole.
- ✗ DO NOT operate the tow pole if any parts are missing as this may cause failure and possible personal injury.

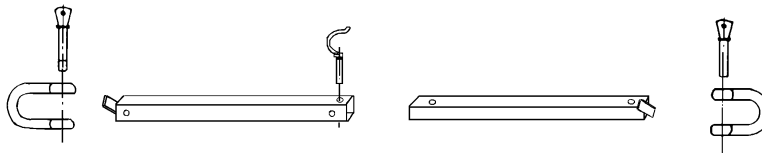
2. DESCRIPTION & ASSEMBLY

The TPK353 is a rigid tow pole having a 3 tonne rolling capacity on a level surface. The ingenious hook mechanism allows for mounting pole between vehicles where towing eyes may be mixed, i.e. not both horizontal or vertical. The tow pole has a maximum length of 1.6m.

2.1. Assembly

Remove contents from packing and check to ensure everything is correct and not damaged. Should you experience any problems contact your supplier immediately.

- 2.1.1. Fit the shackles to the ends of the bar sections according to the diagram below.
- 2.1.2. Fit the two bar sections together using the holes and clip provided.
- 2.1.3. Alternative clip holes are provided for horizontal or vertical tow fittings so that the shackles are always square to the rings.



3. TOWING

TPK353 has a rolling load capacity of 3,000 kg, based on a level surface. Remember the weight of towed vehicle should be calculated to include any load in the vehicle, and to take into account any extreme gradients.

WARNING! Before using equipment ensure you have read, understood and apply Section 1 safety instructions.

TOWING EYES - Many vehicle manufacturers include a separate towing eye which is not permanently fixed to the chassis.

Important: Before fitting the tow pole, to either vehicle, check the manufacturers' handbooks to ensure that the towing points are suitable for use with a tow pole and are capable of safely withstanding a 'brake load'.

LEGAL REQUIREMENTS - It is the responsibility of the towing driver to ensure that all legal requirements are met. This includes the towing operation and actions taken by the towed driver. Check you are insured for towing. Trade users must have a "Trade Insurance Policy" which covers commercial towing. Note the policy will not provide cover if the law is broken, or the weight of towed load exceeds the capacity of the tow pole, or if towed vehicle weighs more than the towing vehicle. When calculating the weight of the towed vehicle remember that any load carried in the vehicle must be added to the kerb weight indicated in the manufacturer's handbook.

- 3.1. When towing, unlock the steering wheel and activate the warning lights on both vehicles. Ensure that the towed vehicle is in neutral, the wheels are free to rotate, and that hand and foot brakes are disengaged.
- 3.2. While driving, the tow pole must remain parallel with the direction of travel, i.e. if the tow fittings are placed on different sides of the vehicles, it will be necessary to drive out of line (the car being towed would not be directly behind the one towing).
- 3.3. The distance between the vehicles must be enough for the driver in the towed vehicle to see the rear lights of the towing vehicle.
- 3.4. Drive to suit the traffic. Even in favourable conditions, a MAXIMUM SPEED OF 15MPH is recommended.
- 3.5. Always take great care when towing and ensure a very gradual "take-up" when starting and braking. **WARNING!** The tow pole and fittings are not able to withstand shock loads resulting from sudden changes in speed.
- 3.6. After use, dismantle the tow pole, clean it and store it in a dry place. Inspect regularly for signs of stress or wear. Replace worn or stressed parts.

NOTE: It is our policy to continually improve products and as such we reserve the right to alter data, specifications and component parts without prior notice.

IMPORTANT: No responsibility is accepted for incorrect use of this product. **WARRANTY:** Guarantee is 12 months from purchase date. Proof of purchase will be required for any claim. **INFORMATION:** For a copy of our latest catalogue, call us on 01284 757525 and leave your full name and address, including post code.