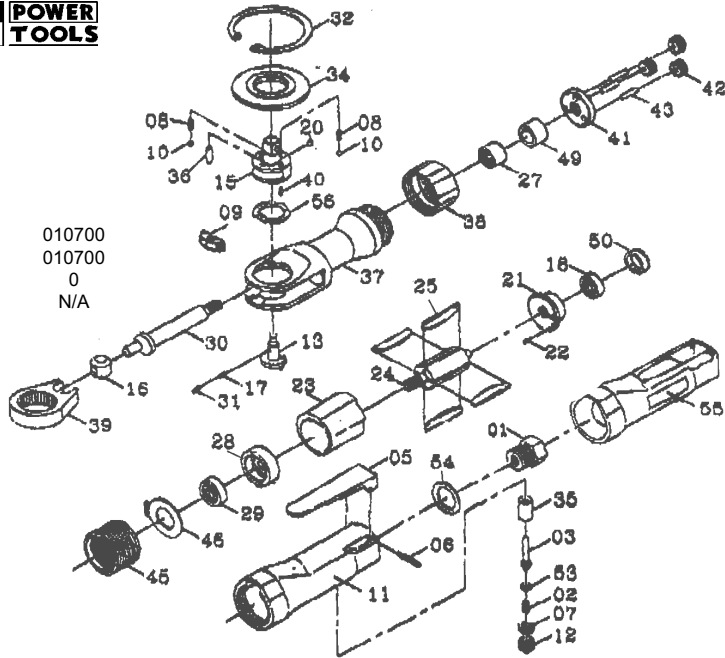


Original Date: 010700
 Issue Date: 010700
 Version No: 0
 Date Modified: N/A



Item	Model & Part No	Model & Part No	Description	Item	Model & Part No	Model & Part No	Description
1	SA607/01	SA608/01	AIR INLET BUSHING	32	SA607/32	SA608/32	INTERNAL STOP RING
2	SA607/02	SA608/02	THROTTLE SPRING	34	SA607/34	SA608/34	THRUST WASHER
3	SA607/03	SA608/03	VALVE STEM	35	SA607/35	SA608/35	THROTTLE VALVE
5	SA607/05	SA608/05	THROTTLE LEVER	36	SA607/36	SA608/36	NEEDLE ROLLER
6	SA607/06	SA608/06	SPRING PIN	37	SA607/37	SA608/37	RATCHET HOUSING
7	SA607/07	SA608/07	O-RING	38	SA607/38	SA608/38	RATCHET NUT
8	SA607/08	SA608/08	FRICITION SPRING	39	SA607/39	SA608/39	RATCHET YOKE
9	SA607/09	SA608/09	PAWL	40	--	SA608/40	SPRING PIN
10	SA607/10	SA608/10	STEEL BALL	41	SA607/41	SA608/41	IDLER SPINDLE
11	SA607/11	SA608/11	MOTOR HOUSING	42	SA607/42	SA608/42	IDLER GEAR
12	SA607/12	SA608/12	VALVE PLUG	43	SA607/43	SA608/43	NEEDLE ROLLER
13	SA607/13	SA608/13	REVERSE BUTTON	45	SA607/45	SA608/45	INTERNAL GEAR
15	SA607/15	SA608/15	RATCHET ANVIL	46	SA607/46	SA608/46	EXHAUST COVER
16	SA607/16	SA608/16	DRIVE BUSHING	49	SA607/49	SA608/49	BUSHING
17	SA607/17	SA608/17	RATCHET SPRING	50	SA607/50	SA608/50	BEARING CAP
18	SA607/18	SA608/18	BALL BEARING	53	SA607/53	SA608/53	O-RING
20	SA607/20	SA608/20	STEEL BALL	54	SA607/54	SA608/54	SPRING WASHER
21	SA607/21	SA608/21	REAR END PLATE	55	SA607/55	SA608/55	GRIP
22	SA607/22	SA608/22	SPRING PIN	56	SA607/56	SA608/56	WASHER
23	SA607/23	SA608/23	CYLINDER	57	SA607/K01	SA608/K01	THROTTLE HANDLE KIT
24	SA607/24	SA608/24	ROTOR	58	SA607/K02	SA608/K02	VALVE KIT
26	SA607/26	SA608/26	ROTOR BLADE	59	SA607/K03	SA608/K03	IDLER GEAR KIT
27	SA607/27	SA608/27	NEEDLE BEARING	60	SA607/K04	SA608/K04	RATCHET HOUSING KIT
28	SA607/28	SA608/28	FRONT END PLATE	61	SA607/K05	SA608/K05	RATCHET HEAD KIT
29	SA607/29	SA608/29	BALL BEARING				
30	SA607/30	SA608/30	CRANK SHAFT				
31	SA607/31	SA608/31	SPRING CAP				

NOTE: It is our policy to continually improve products and as such we reserve the right to alter data, specifications and component parts without prior notice. **IMPORTANT:** No liability is accepted for incorrect use of this equipment. **WARRANTY:** See note in introduction. Guarantee is 12 months from purchase date, proof of which will be required for any claim. **INFORMATION:** Call us for a copy of our latest catalogue and promotions on 01284 757525 and leave your full name and address including your postcode.



AIR RATCHET WRENCH

Models: SA607 & SA608

Thank you for purchasing a Sealey Product. Manufactured to a high standard this product will, if used according to these instructions and properly maintained, give you years of trouble free performance.



IMPORTANT: PLEASE READ THESE INSTRUCTIONS CAREFULLY. NOTE THE SAFE OPERATIONAL REQUIREMENTS, WARNINGS AND CAUTIONS. USE THIS PRODUCT CORRECTLY AND WITH CARE FOR THE PURPOSE FOR WHICH IT IS INTENDED. FAILURE TO DO SO MAY CAUSE DAMAGE OR PERSONAL INJURY AND WILL INVALIDATE THE WARRANTY. PLEASE KEEP INSTRUCTIONS SAFE FOR FUTURE USE.

1. SAFETY INSTRUCTIONS

- 3 Follow all workshop safety rules, regulations, and conditions when using wrench.
- p **WARNING!** Disconnect from air supply before changing accessories or servicing.
- 3 Maintain the wrench in good condition and replace any damaged or worn parts. *Use genuine parts only. Non-authorized parts may be dangerous and will invalidate the warranty.*
- p **WARNING!** Check correct air pressure is maintained and not exceeded. We recommend 90psi.
- 3 Keep air hose away from heat, oil and sharp edges. Check air hose for wear before each use and ensure that all connections are secure.
- 3 Only use impact sockets which are specifically designed for use with a ratchet wrench.
- 3 Wear approved safety eye/face shield, ear defenders, and hand protection.
- 3 Maintain correct balance and footing. Ensure the floor is not slippery and wear non-slip shoes.
- 3 Keep children and non essential persons away from the working area.
- 7 DO NOT use the wrench for a task it is not designed to perform.
- p **WARNING! DO NOT** use wrench if damaged or thought to be faulty. (Contact Service Agent).
- 7 DO NOT use wrench unless you have been instructed in its use by a qualified person.
- 7 DO NOT expose the comfort grip to excessive heat.
- 7 DO NOT carry the wrench by the air hose, or yank the hose from the air supply.
- 7 DO NOT operate wrench if you are tired, under the influence of alcohol, drugs or intoxicating medication.
- 7 DO NOT carry wrench with your hand on the power trigger in order to avoid unintentional starting.
- 7 DO NOT direct air from the air hose at yourself or others.
- 3 When not in use disconnect from air supply and store in a safe, dry, childproof location.

2. INTRODUCTION & SPECIFICATIONS

Feature packed air ratchet wrench. Composite air motor jacket reduces hand-chill and provides extra grip for comfort and control. Unique design ratchet head is stronger than traditional ratchet style - reduce damage to the tool by over-torque. Grease fitting on ratchet head allows smoother operation and longer working life. Safety trigger device.

IMPORTANT WARRANTY INFORMATION

The ratchet heads are supplied fitted with a rubber boot to provide some protection from impact. Because it is possible to break the head by dropping and also by excessive hand force, we do not warranty ratchet heads. The rest of the product is covered by a 1 year parts and labour warranty. This does not affect your statutory rights.

MODELSA607

Drive size 3/8" Sq
 Max torque 50ft/lb
 Air consumption 4cfm
 Operating pressure 90psi
 Air inlet size 1/4" BSP
 Weight 1.2kg

MODELSA608

Drive size 1/2" Sq
 Max torque 50ft/lb
 Air consumption 4cfm
 Operating pressure 90psi
 Air inlet size 1/4" BSP
 Weight 1.2kg

3. PREPARING WRENCH FOR USE

3.1. Air Supply

- 3.1.1. Ensure wrench air valve (or trigger) is in the "off" position before connecting to the air supply.
- 3.1.2. You will require an air pressure of 90psi, and an air flow according to specification.
- 3.1.3. **WARNING!** Ensure the air supply is clean and does not exceed 90 psi while operating the wrench. Too high an air pressure and unclean air will shorten the product life due to excessive wear, and may be dangerous causing damage and/or personal injury.
- 3.1.4. Drain the air tank daily. Water in the air line will damage the wrench.
- 3.1.5. Clean air inlet filter weekly. Recommended hook-up procedure is shown in fig 1.
- 3.1.6. Line pressure should be increased to compensate for unusually long air hoses (over 8 metres). The minimum hose diameter should be 1/4" I.D. and fittings must have the same inside dimensions.
- 3.1.7. Keep hose away from heat, oil and sharp edges. Check hose for wear, and make certain that all connections are secure.

3.2. Couplings.

Vibration may cause failure if a quick change coupling is connected directly to the wrench. To overcome this, connect a leader hose to the wrench. A quick change coupling may then be used to connect the leader hose to the air line recoil hose. See fig 1 & 2.

fig 1

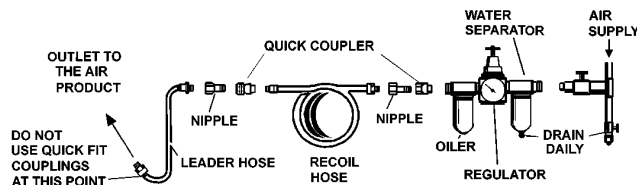
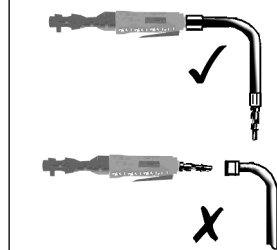


fig 2



4. OPERATING INSTRUCTIONS

WARNING! Ensure you read, understand and apply safety instructions before use.

- 4.1. Only use impact sockets which are specifically designed for use with a ratchet wrench.
- 4.2. Connect the wrench to the air hose as in chapter 3.
- 4.3. Place the socket over the subject nut and depress the trigger to operate the wrench.
- 4.4. To change wrench direction turn the switch on the head of the wrench.
DO NOT use any additional force upon the wrench in order to remove a nut.

IMPORTANT WARRANTY INFORMATION

The ratchet heads are supplied fitted with a rubber boot to provide some protection from impact. Because it is possible to break the head by dropping and also by excessive hand force, we do not warranty ratchet heads. The rest of the product is covered by a 1 year parts and labour warranty. This does not affect your statutory rights.

DO NOT allow wrench to free run for an extended period of time as this will shorten its life.

5. MAINTENANCE

- WARNING!** Disconnect wrench from air supply before changing accessories, servicing or performing maintenance. Replace or repair damaged parts. *Use genuine parts only. Non-authorized parts may be dangerous and will invalidate the warranty.*
- 5.1. Lubricate the air wrench daily with a few drops of Sealey air tool oil dripped into the air inlet to prolong its life.
 - 5.2. Clean the wrench after use. DO NOT use worn, or damaged sockets.
 - 5.3. Loss of power or erratic action may be due to the following:
 - a) Excessive drain on the air line. Moisture or restriction in the air pipe. Incorrect size or type of hose connectors. To remedy check the air supply and follow instructions in chapter 3.
 - b) Grit or gum deposits in the wrench may also reduce performance. If your model has an air strainer (located in the area of the air inlet), remove the strainer and clean it. Flush the wrench out with gum solvent oil or an equal mixture of SAE No 10 oil and paraffin. Allow to dry before use.
 - 5.4. For a full service contact your local Sealey service agent.
 - 5.5. When not in use, disconnect from air supply, clean wrench and store in a safe, dry, childproof location.
 - 5.6. Periodically lubricate ratchet yoke drive shaft using grease nipple on side of the ratchet head. This will reduce friction and increase the power and longevity of the tool.

Declaration of Conformity



We, the sole importer into the UK, declare that the products listed here are in conformity with the following EEC standards and directives. The construction files for these products are held by the Manufacturer and may be inspected, by a national authority, upon request to Jack Sealey Ltd.

Mini Air Ratchet Wrench
Models: SA607 & SA608
98/37/EC Machinery Directive
93/68/EEC Marking Directive

Signed by Mark Sweetman

1st July 2000

For Jack Sealey Ltd. Sole importer into the UK of Sealey Power Tools.