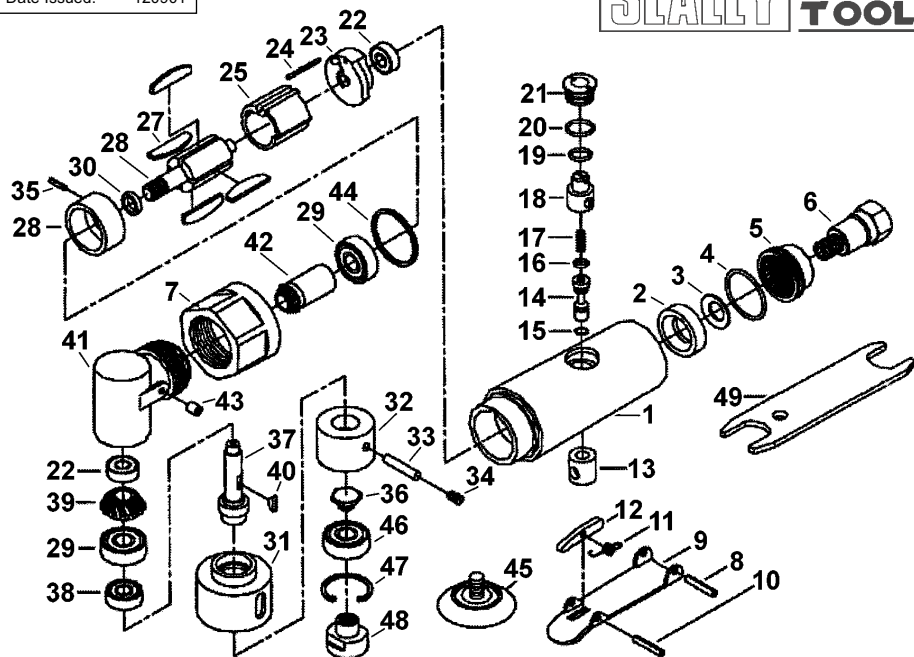


Issue No: 1
Date Issued: 120901



INSTRUCTIONS FOR:

MINI ORBITAL AIR SANDER

Model: **SA701**

Thank you for purchasing a Sealey Product. Manufactured to a high standard this product will, if used according to these instructions and properly maintained, give you years of trouble free performance.

IMPORTANT: PLEASE READ THESE INSTRUCTIONS CAREFULLY. NOTE THE SAFE OPERATIONAL REQUIREMENTS, WARNINGS AND CAUTIONS. USE THIS PRODUCT CORRECTLY AND WITH CARE FOR THE PURPOSE FOR WHICH IT IS INTENDED. FAILURE TO DO SO MAY CAUSE DAMAGE AND/OR PERSONAL INJURY AND WILL INVALIDATE THE WARRANTY. PLEASE KEEP INSTRUCTIONS SAFE FOR FUTURE USE.

1. SAFETY INSTRUCTIONS

1.1. Operational Safety

- ⚠ **WARNING!** Ensure Health & Safety, local authority, and general workshop practice regulations are adhered to when using this equipment.
- ⚠ **WARNING!** Disconnect from air supply before changing accessories or servicing.
- 3 Maintain the sander in good condition (use an authorised service agent).
- 3 Replace or repair damaged parts. Use genuine parts only. Unauthorised parts may be dangerous and will invalidate the warranty.
- 3 Use in a suitable clean and tidy work area and ensure there is adequate lighting.
- 3 Before each use check abrasive pads for condition. If worn or damaged replace immediately.
- 3 Ensure the abrasive pad rating is the same as, or greater than the RPM rating of the sander.
- 3 Ensure there are no flammable or combustible materials near the work area.
- ⚠ **WARNING!** Always wear approved eye or face and hand protection when operating the sander.
- 3 Use face, dust, or respiratory protection in accordance with COSHH regulations.
- 3 Depending on the task, sander noise level may exceed 85dB, in which case wear safety ear defenders.
- 3 Remove ill fitting clothing. Remove ties, watches, rings, other loose jewellery and contain and/or tie back long hair.
- 3 Maintain correct balance and footing. Ensure the floor is not slippery and wear non-slip shoes.
- 3 Keep children and unauthorised persons away from the work area.
- 3 Check moving parts alignment on a regular basis.
- 3 Ensure workpiece is secure before operating the sander. Never hold a workpiece by hand.
- 3 Check the workpiece to ensure there are no protruding screws, bolts, nuts, nails, stones, etc.
- 3 Avoid unintentional starting.
- ⚠ **WARNING!** Ensure correct air pressure is maintained and not exceeded. Recommended pressure 70-90psi.
- 3 Keep air hose away from heat, oil and sharp edges. Check air hose for wear before each use and ensure that all connections are secure.
- 3 Prolonged exposure to vibration from this sander poses a health risk. It is the owner's responsibility to correctly assess the potential hazard and issue guidelines for safe periods of use and offer suitable protective equipment.
- 7 DO NOT use the sander for a task it is not designed to perform.
- 7 DO NOT operate sander if any parts are damaged or missing as this may cause failure and/or personal injury.
- ⚠ **WARNING!** DO NOT sand any materials containing asbestos.
- 7 DO NOT carry the sander by the hose, or yank the hose from the air supply.
- 7 DO NOT force, or apply heavy pressure to the sander, let the sander do the work.
- 7 DO NOT place air line attachments close to your face and do not point at other persons or animals.
- 7 DO NOT operate sander when you are tired or under the influence of alcohol, drugs or intoxicating medication.
- 7 DO NOT use sander where there are flammable liquids, solids or gases such as paint solvents and including waste wiping or cleaning rags etc.
- 7 DO NOT carry the sander with your finger on the power lever.
- 7 DO NOT direct air from the air hose at yourself or others.
- 3 When not in use disconnect from air supply and store in a safe, dry, childproof location.

Item	Part No.	Description	Item	Part No.	Description	Item	Part No.	Description
1	SA701/01	Motor Housing	18	SA701/18	Regulator	35	SA701/35	Pin
2	SA701/02	Silencer	19	SA701/19	O-ring	36	SA701/36	Nut Screw
3	SA701/03	Washer	20	SA701/20	O-ring	37	SA701/37	Spindle
4	SA701/04	O-ring	21	SA701/21	Valve Screw	38	SA701/38	Bearing
5	SA701/05	Deflector	22	SA701/22	Bearing	39	SA701/39	Bevel Gear
6	SA701/06	Air Inlet	23	SA701/23	Rear End Plate	40	SA701/40	Key
7	SA701/07	Housing Lock Ring	24	SA701/24	Cylinder Pin	41	SA701/41	Angle Head Housing
8	SA701/08	Lever Pin	25	SA701/25	Cylinder	42	SA701/42	Pinion
9	SA701/09	Throttle Lever	26	SA701/26	Rotor	43	SA701/43	Grease Fitting
10	SA701/10	Spring Pin	27	SA701/27	Rotor Blade	44	SA701/44	Collar
11	SA701/11	Spring	28	SA701/28	Front End Plate	45	SA701/45	Sanding Pad
12	SA701/12	Stop Rod	29	SA701/29	Bearing	46	SA701/46	Bearing
13	SA701/13	Valve Bushing	30	SA701/30	Rotor Spacer	47	SA701/47	Inverted Retaining Ring
14	SA701/14	Valve Stem	31	SA701/31	Guard Cover	48	SA701/48	Pad Screw
15	SA701/15	O-ring	32	SA701/32	Balance Weight	49	SA701/49	Spanner (17mm)
16	SA701/16	O-ring	33	SA701/33	Pin, 4 x 18mm			
17	SA701/17	Spring	34	SA701/34	Screw, M6			

NOTE: It is our policy to continually improve products and as such we reserve the right to alter data, specifications and component parts without prior notice.

IMPORTANT: No liability is accepted for incorrect use of this equipment.

WARRANTY: Guarantee is 12 months from purchase date, proof of which will be required for any claim.

INFORMATION: For a copy of our latest catalogue and promotions call us on 01284 757525 and leave your full name and address, including postcode.



Sole UK Distributor, Sealey Group, Bury St. Edmunds, Suffolk.



01284 757500



01284 703534

E-mail: sales@sealey.co.uk



1.2. LEAD PAINT WARNING!

Paint once contained lead as a traditional ingredient. The dust caused by the removal of such paint is toxic and must therefore be avoided. The following action must be taken before using the sander on a surface that you suspect may contain lead paint.

1. User must determine potential hazard relating to age of paint to be removed (modern paints do not have lead content).
2. **DANGER!** Keep all persons and pets away from the working area. The following are particularly vulnerable to the effects of lead paint dust: *Pregnant women, babies and children.*
3. We recommend personal protection by using the following safety items:
 - a) Paint Spray Respirator (Our ref SSP16EN)
 - b) PE Coated Hooded Coverall (Our ref SSP266).
 - c) Latex Gloves (Our ref SSP24).
4. Take adequate measures to contain the paint dust, flakes and scrapings.
5. Continue to wear safety equipment as in (3) and thoroughly clean all areas when task is complete. Ensure paint waste is disposed of in sealed bags or containers.

2. SPECIFICATION

Pad Size50mm
 Thread Size5/16"UNF
 Free Speed15000rpm
 Operating Pressure90psi
 Air Consumption2cfm
 Air Inlet1/4"BSP

Sound Power Pressure102.4dB(A)
 Sound Pressure90.2dB(C)
 Vibration<2.5m/s²
 Weight0.7kg

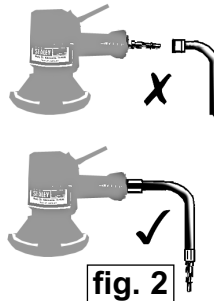
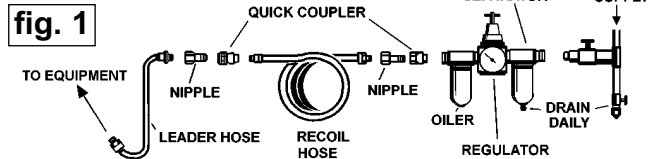
3. PREPARING SANDER FOR USE

3.1. Air Supply

- 3.1.1. Ensure the sander air valve (or throttle) is in the "Off" position before connecting to the air supply.
- 3.1.2. You will require an air pressure between 70-90psi, and an air flow according to the specification above.
- 3.1.3. **WARNING!** Ensure the air supply is clean and does not exceed 90psi while operating the sander. Too high an air pressure and/or unclean air will shorten the product life due to excessive wear, and may be dangerous, causing damage and/or personal injury.
- 3.1.4. Drain the air tank daily. Water in the air line will damage the sander **and will invalidate your warranty.**
- 3.1.5. Clean air inlet filter weekly. Recommended hook-up procedure is shown in fig. 1.
- 3.1.6. Line pressure should be increased to compensate for unusually long air hoses (over 8 metres). The minimum hose diameter should be 1/4" I.D. and fittings must have the same inside dimensions.
- 3.1.7. Keep hose away from heat, oil and sharp edges. Check hoses for wear and make certain that all connections are secure.

3.2. Couplings

Vibration may cause failure if a quick change coupling is connected directly to the air sander. To overcome this, connect a leader hose to the sander. A quick change coupling may then be used to connect the leader hose to the air line recoil hose. See figs. 1 & 2.



4. OPERATING INSTRUCTIONS

WARNING! Ensure you read, understand and apply the safety instructions in Section 1 before use.

4.1. Assembly

- 4.1.1. Fit backing pad and sanding disc. Use only discs with speed ratings equal to or higher than the speed rating of the sander. DO NOT use cloth backed sanding discs.
- 4.1.2. Connect air supply to sander, press the control valve lever and check that the sander is working correctly.
- 4.1.3. The air flow may be regulated by adjusting the regulator valve in the back of the handle.

4.2. Operating

The sander is designed to provide a combined "rotary" and "random orbit" action.

Always use a grit appropriate for the job. Work progressively from coarse grades to finer grades. DO NOT go from coarse to fine in one step as it may be difficult to remove swirl marks left by the coarse grit. DO NOT apply excessive pressure, let the sander do the work for you. Start the sander and bring the sanding disc to the the work surface evenly and slowly. Move the sander back and forth in overlapping areas. Remove the sanding disc from the work surface before stopping the sander. Regularly check the sanding disc for wear, always change if cracked or damaged.

DO NOT allow sander to run in "idle rotation" for an extended period of time as this will reduce bearing life.

5. MAINTENANCE

WARNING! Disconnect sander from air supply before changing accessories, servicing or performing maintenance. Replace or repair damaged parts. Use genuine parts only. Unauthorised parts may be dangerous and will invalidate the warranty.

- 5.1. If the air supply does not have an oiler lubricate the air sander daily with a few drops of good grade air tool oil such as Sealey ATO/500 or ATO/1000, dripped into the air inlet before use.
- 5.2. Clean the sander after use and change pads when required.
- 5.3. Loss of power or erratic action may be due to the following:
 - a) Excessive drain on the air line. Moisture or restriction in the air pipe. Incorrect size or type of hose connectors. To remedy check the air supply and follow instructions in Section 3.
 - b) Grit or gum deposits in the sander may also reduce performance. If your model has an air strainer (located in the area of the air inlet), remove the strainer and clean it. Flush the sander out with gum solvent oil or an equal mixture of SAE No 10 oil and kerosene. Allow to dry before use.

If problems continue, contact your local Sealey service agent.
- 5.4. For a full service contact your local Sealey service agent.
- 5.5. When not in use, disconnect from air supply, clean sander and store in a safe, dry, childproof location.

Declaration of Conformity



We, the sole importer into the UK, declare that the product listed here is in conformity with the following standards and directives. The construction file for this product is held by the manufacturer and may be inspected, by a national authority, upon request to Jack Sealey Ltd.

**Mini Orbital Air Sander
Model: SA701**

98/37/EC Machinery Directive
93/68/EEC Marking Directive

Signed by Mark Sweetman

13th September 2001

For Jack Sealey Ltd. Sole importer into the UK of Sealey Power Tools.